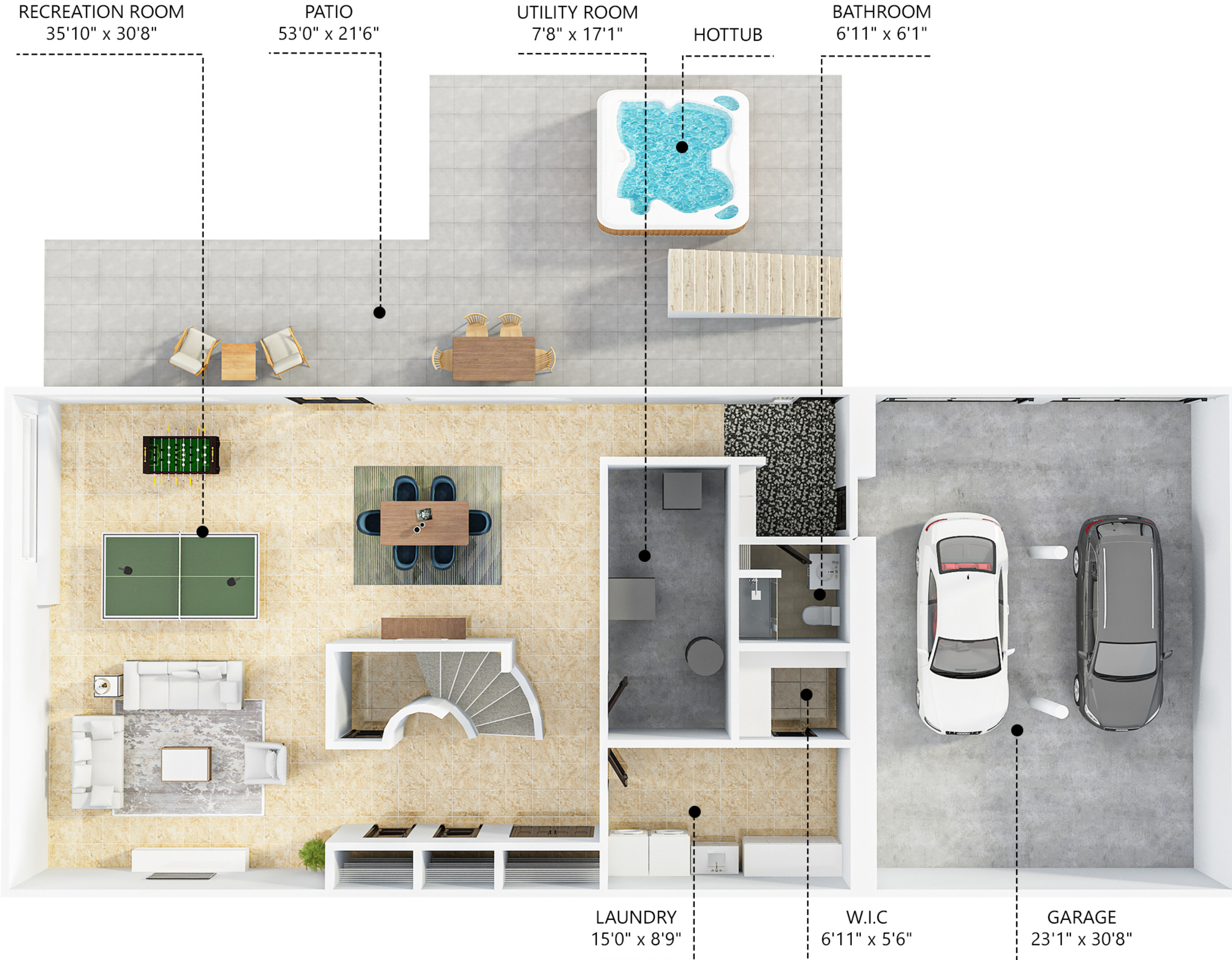


8349 OK LANDING, TBD6, VERNON, BC, V1H 1J5, CANADA



GROSS EXTERNAL AREA
TOTAL: 5,345 sq.ft

BASEMENT: 1,677 sq.ft, MAIN FLOOR: 1,989 sq.ft, UPSTAIRS: 1,679 sq.ft

EXCLUDED AREAS: BALCONY: 506 sq.ft, GARAGE: 1,281 sq.ft

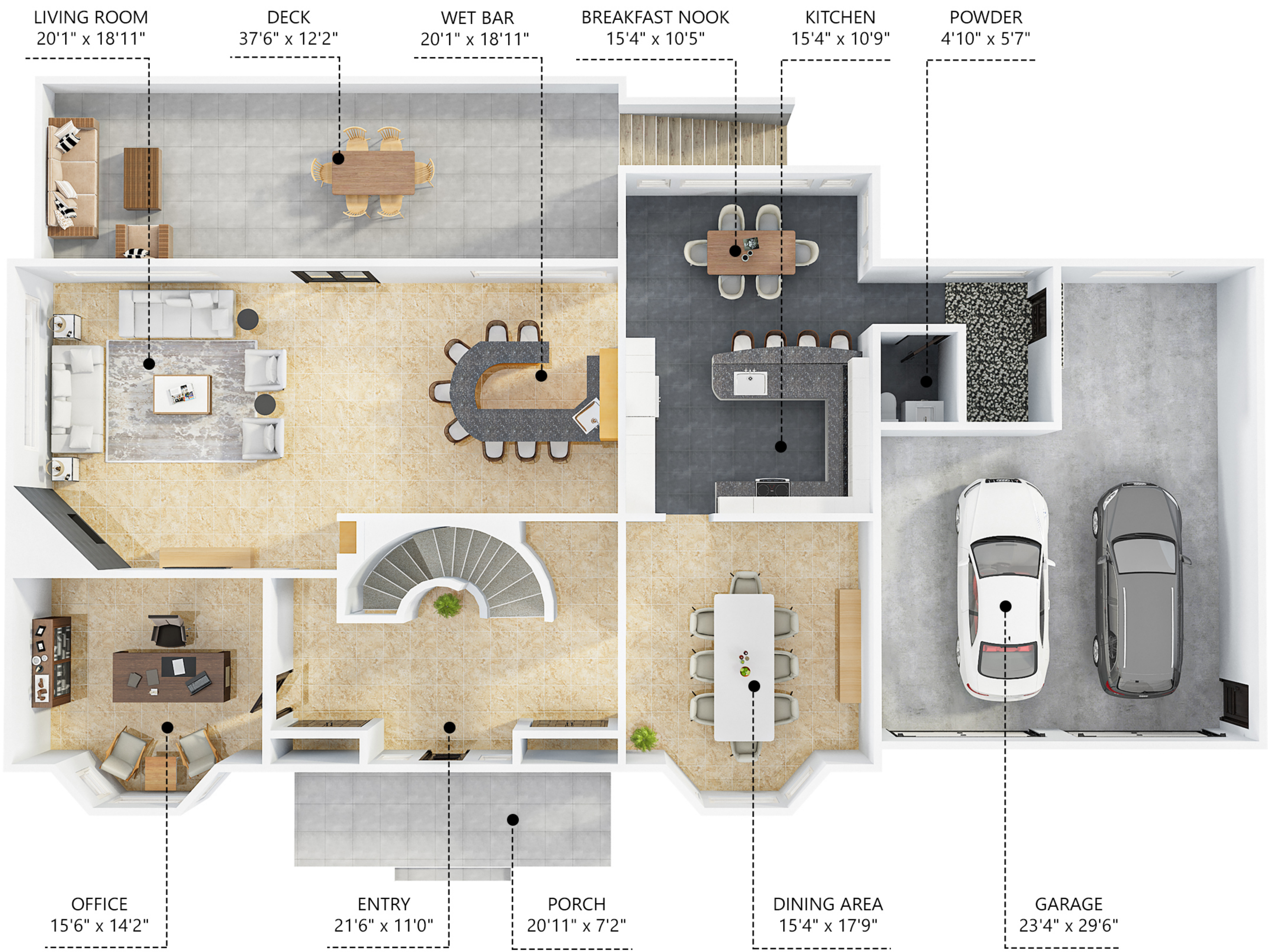
DECK: 503 sq.ft, PATIO: 858 sq.ft

UTILITY ROOM: 131 sq.ft, PORCH: 158 sq.ft

SIZE AND DIMENSIONS ARE APPROXIMATE, ACTUAL MAY VARY

BASEMENT

8349 OK LANDING, TBD6, VERNON, BC, V1H 1J5, CANADA



GROSS EXTERNAL AREA
TOTAL: 5,345 sq.ft

BASEMENT: 1,677 sq.ft, MAIN FLOOR: 1,989 sq.ft, UPSTAIRS: 1,679 sq.ft

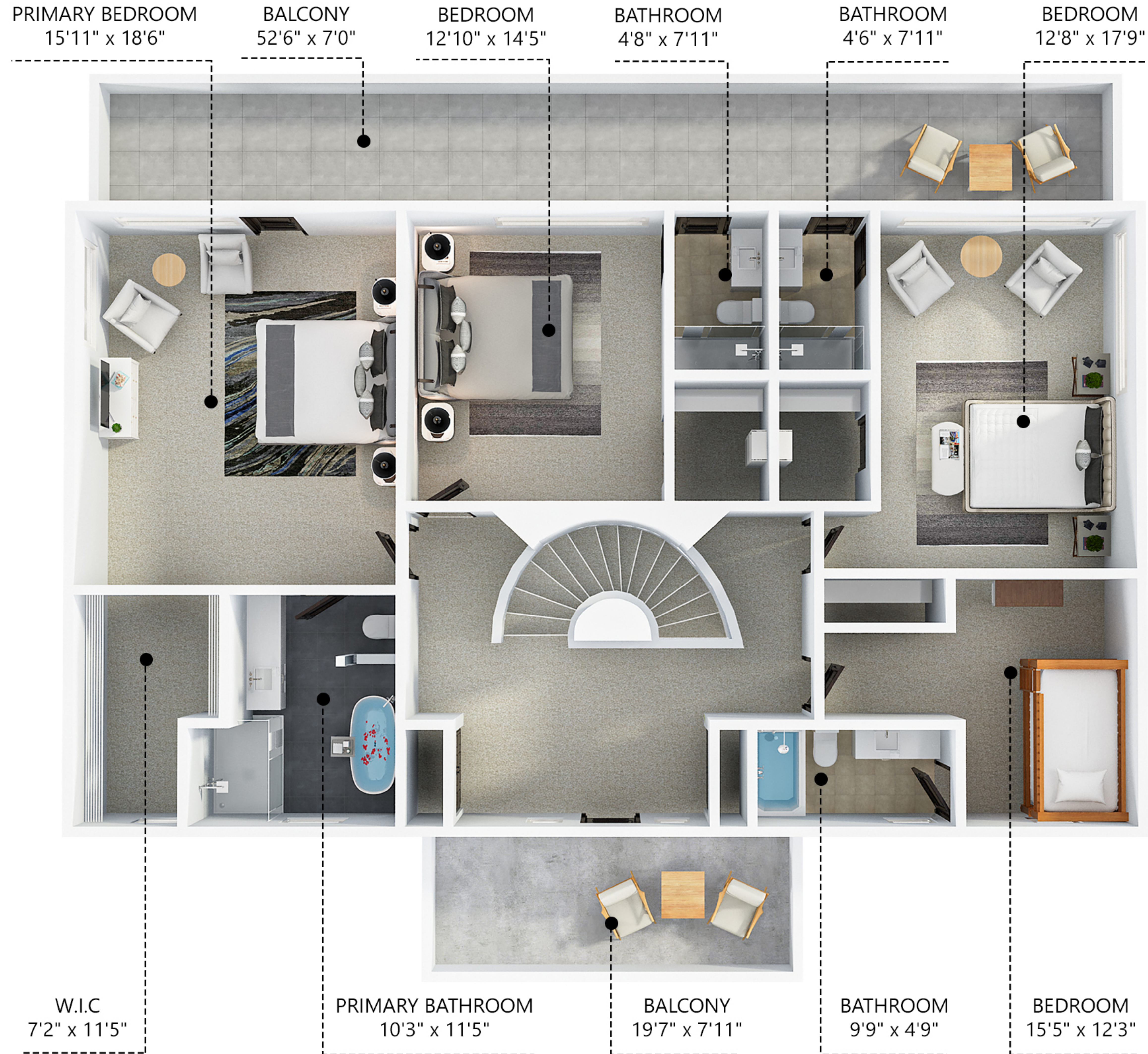
EXCLUDED AREAS: BALCONY: 506 sq.ft, GARAGE: 1,281 sq.ft

DECK: 503 sq.ft, PATIO: 858 sq.ft

UTILITY ROOM: 131 sq.ft, PORCH: 158 sq.ft

SIZE AND DIMENSIONS ARE APPROXIMATE, ACTUAL MAY VARY

8349 OK LANDING, TBD6, VERNON, BC, V1H 1J5, CANADA



GROSS EXTERNAL AREA

TOTAL: 5,345 sq.ft

BASEMENT: 1,677 sq.ft, MAIN FLOOR: 1,989 sq.ft, UPSTAIRS: 1,679 sq.ft

EXCLUDED AREAS: BALCONY: 506 sq.ft, GARAGE: 1,281 sq.ft

DECK: 503 sq.ft, PATIO: 858 sq.ft

UTILITY ROOM: 131 sq.ft, PORCH: 158 sq.ft

SIZE AND DIMENSIONS ARE APPROXIMATE, ACTUAL MAY VARY

UPSTAIRS